

## Flame Photometric Detector

Description	HP Part No.	Qty.
1A. Exit tube assembly–SST	19256-20705	1
1. Exit tube assembly–Al	19256-20700	1
2. Nut, brass, 1/4 in.	0100-0056	1
3. Ferrule, Vespel, 1/4 in. ID (order no. 5080-8774)	0100-1061	1
4. Weldment, block	19256-80560	1
5. O-ring (Kalrez) ignitor	0905-1102	1
6. Spacer, ignitor	19256-20590	1
7. Glow plug	0854-0141	1
8. Ignitor cable assembly	G1535-60600	–
9. Gasket, heat shield	19256-80040	1
10. Window, first heat shield	19256-80030	1
11. Disk, heat shield	19256-20580	1
12. Coupling, stainless steel	19256-20550	1
13. Lockwasher (4 required)	2190-0108	4
14. Screw, M3 x 12 (4 required)	0515-0911	4
15. Clamp	19256-00090	1
16. O-ring, silicone, 0.926 in. ID (orange)	0905-0955	1
17. Window, second heat shield	19256-80060	1
18. O-ring, silicone, 1.05 in. ID (orange)	0905-1104	1
19. Flange adapter	19256-20510	1
20. Flange ring	19256-00200	1
21. Screw, M3 x 25 (4 required)	0515-0065	4
22. O-ring, Viton, 1.239 in. ID (brown)	0905-1100	1

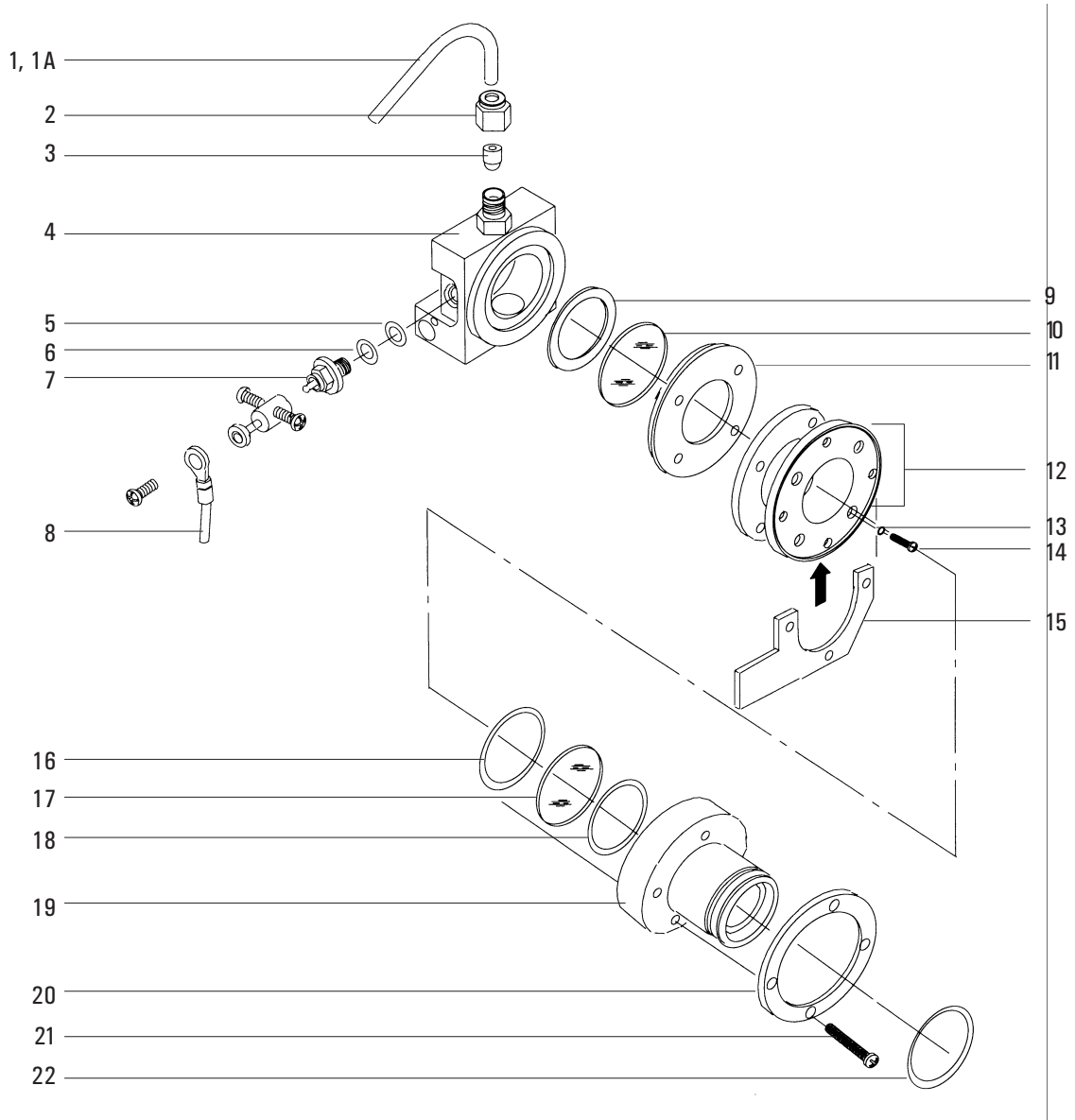


Figure 1320-11 Exploded Diagram of the Flame Photometric Detector